

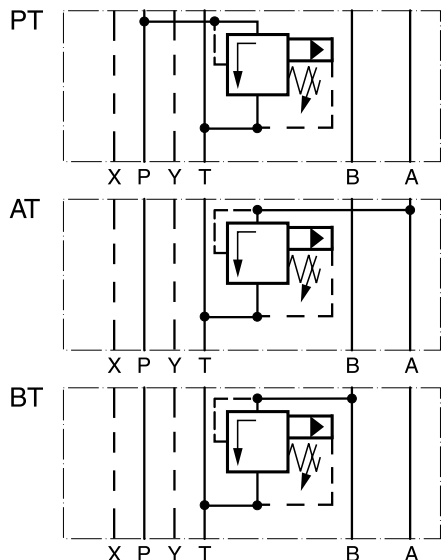
The pilot operated pressure relief valves from the Parker Manapak series RM are in sandwich design for easy configuration of stack systems. Depending on type, pressure limiting can be achieved in ports P, A or B with unloading to port T.

RM valves may only be mounted in the defined mount- ing position.

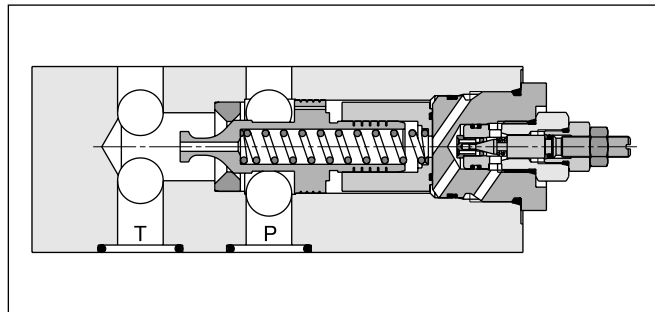
**Features**

- The valve bodies of the Parker Manapak valve series RM are made of steel.
- The pressure can be set by hexagon socket screw (RM4), hexagon socket screw or knob with cylinder lock (RM6).Piloting results in a flat p/Q performance curve.
- Piloting results in a flat p/Q performance curve.
- The orifices located in the main spool limit the pilot oil flow.

**Schematics RM4-NG16, RM6-NG25 (only PT)**



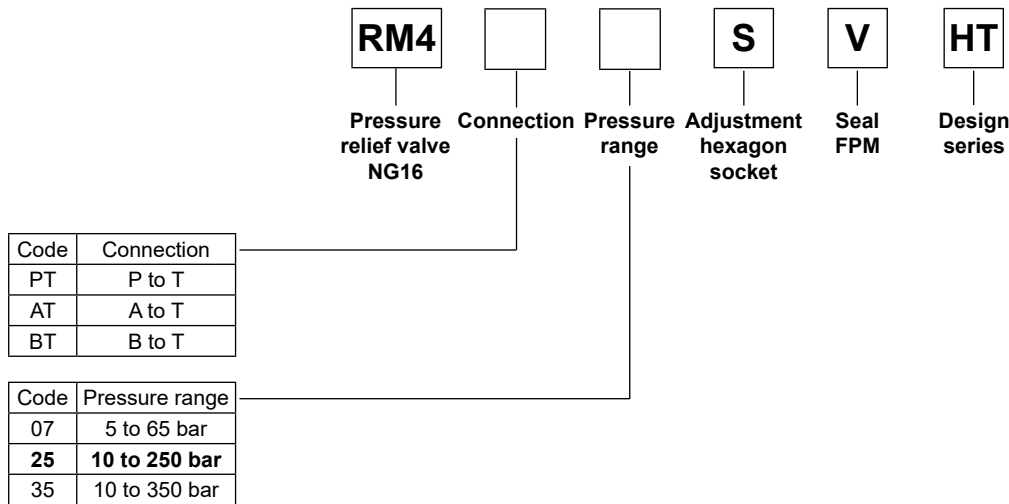
RM6



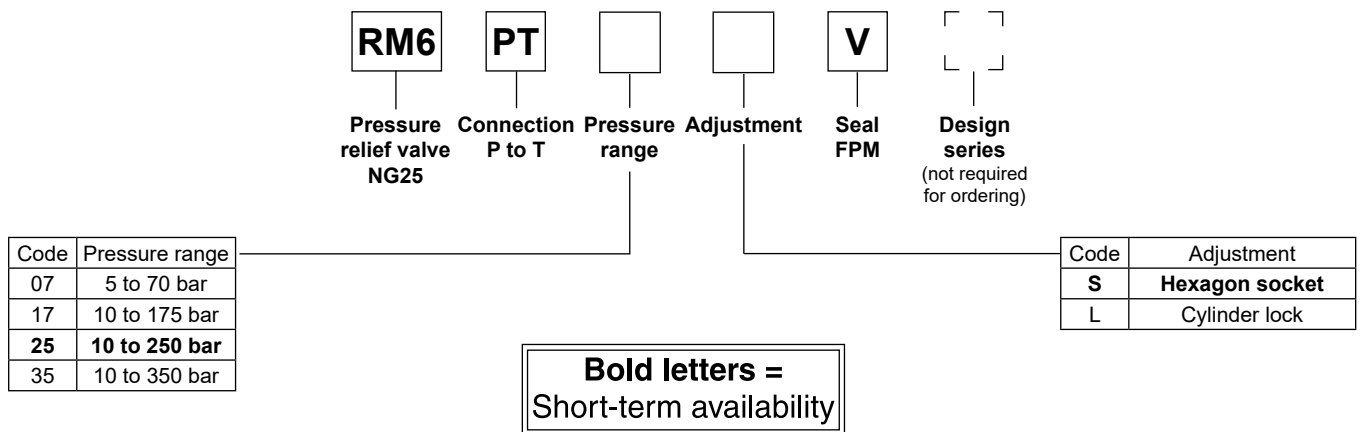
RM6

**Technical data**

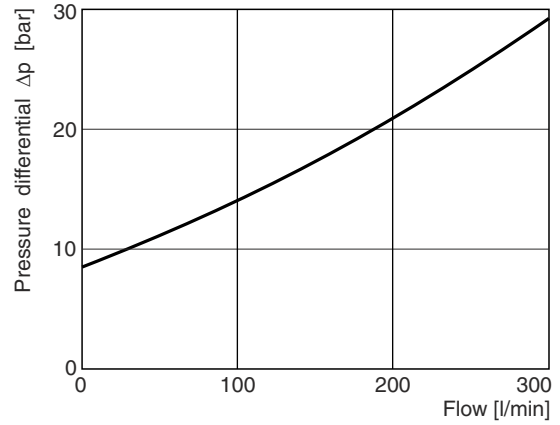
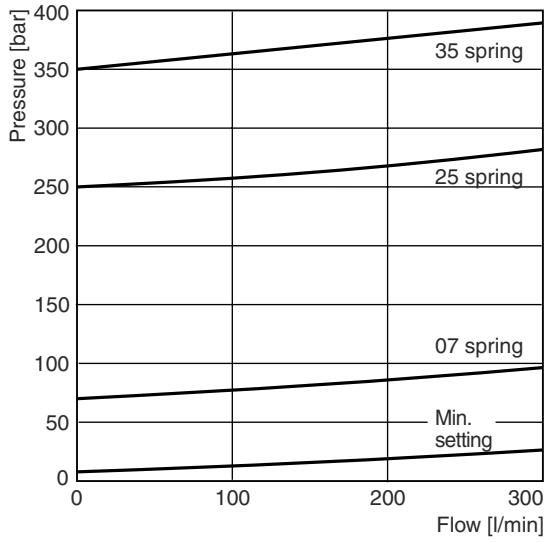
General			
Design		Pilot operated pressure relief valve	
Actuation		hydraulic	
Size		<b>NG16</b>	<b>NG25</b>
Mounting interface		ISO 4401	
Mounting position		unrestricted	
Ambient temperature	[°C]	-20...+60	
MTTF <sub>D</sub> value	[years]	150	
Weight	[kg]	4.9	5.9
Hydraulic			
Max. operating pressure	[bar]	350	
Fluid		Hydraulic oil according to DIN 51524	
Fluid temperature	[°C]	-20...+70	
Viscosity,	permitted	20 ... 400	
	recommended	30 ... 80	
Filtration		ISO 4406 (1999); 18/16/13	



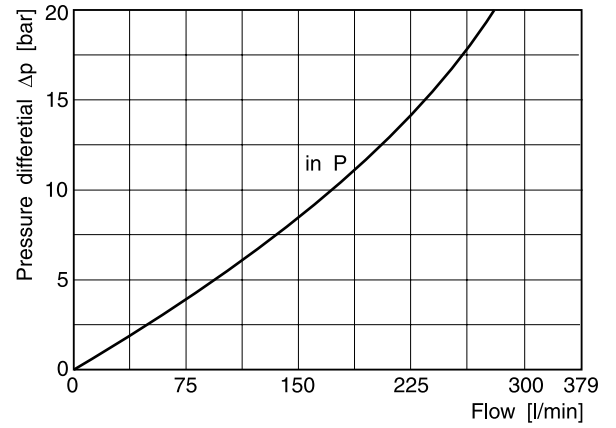
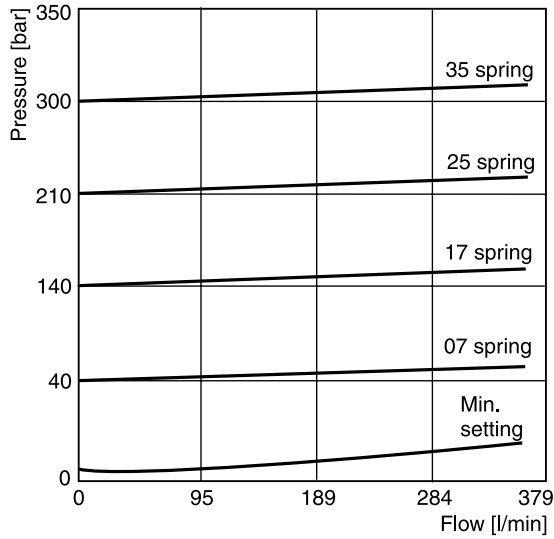
**7**



**p/Q performance curves  
 RM4**



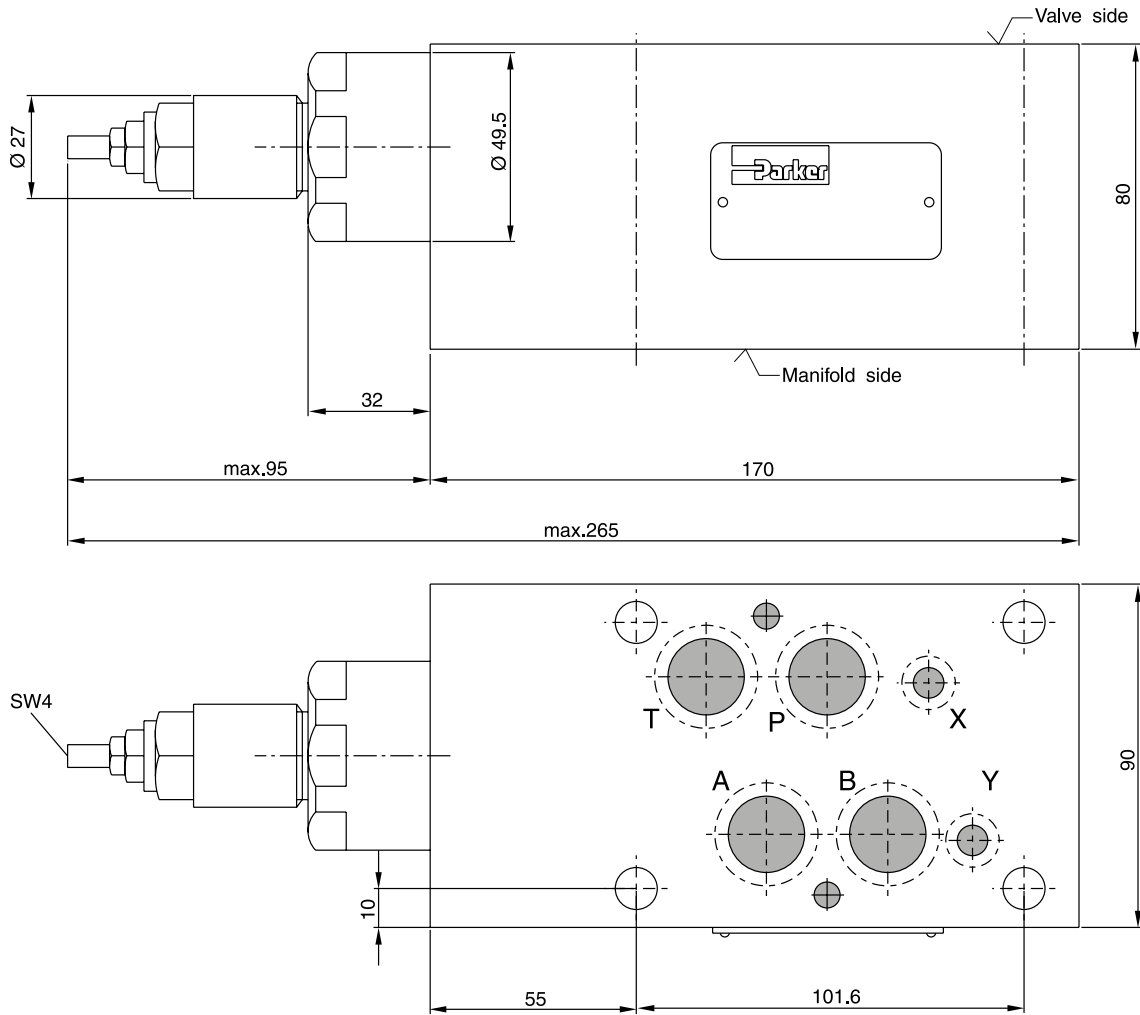
**RM6**



All characteristic curves measured with HLP46 at 50 °C.

7

**RM4**  
**Adjustment code S**

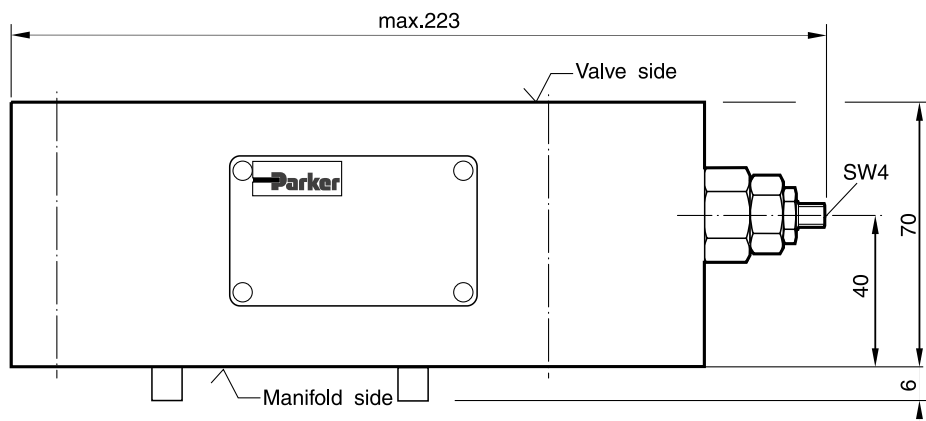


7

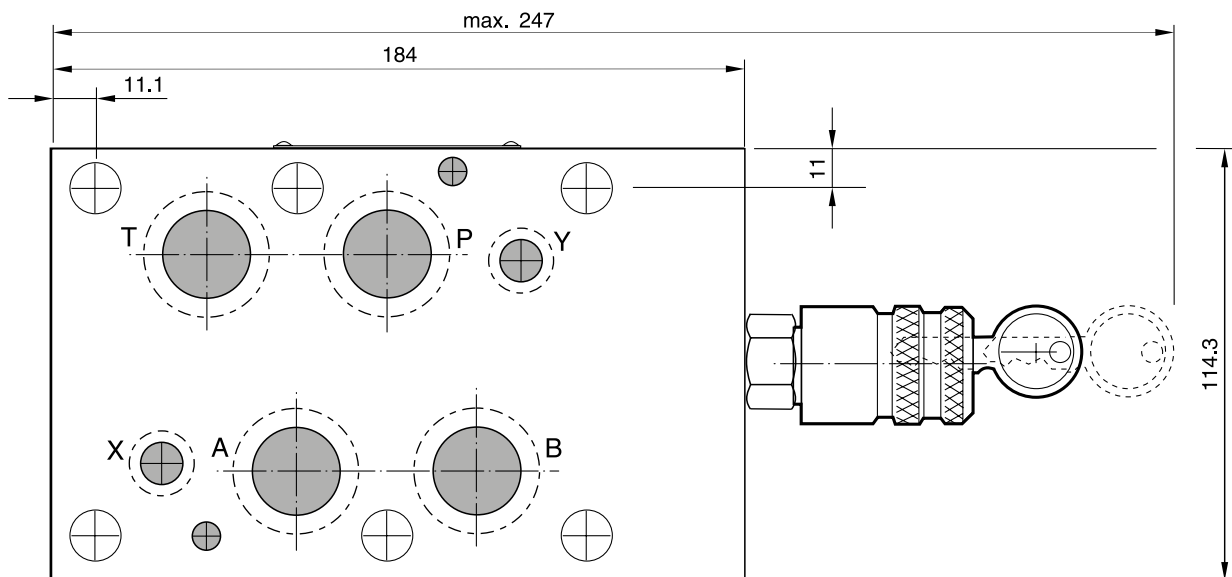
Seal kit RM4	
Seal	Order code
V	SK-RM4-V-HT

**RM6**

**Adjustment Code S**



**Adjustment Code L**



**7**

Seal kit RM6	
Seal	Order code
V	SK-RM6-V-11